

Equipment Racks & Accessories

Carpeted Racks, Rolling Racks & Accessories

Sound System Components

RACK MOUNT CASES & ACCESSORIES

Widest Selection of Rack Configurations

A great way to install rack-mountable mixers, amplifiers, CD players, tape decks and wireless microphone receivers in a sturdy case for either stationary or road use. Power Panel for "single switch" convenience.

Our expanded Rack offering includes:

Odyssey CRE Racks: Carpeted Econo Rack with optional wheels - 14 space (or other size), 17 in. deep, friction fit lids, 3 in. casters

Odyssey CRP Racks: Carpeted Pro Rack with optional wheels - 14 space (or other size), 18.5 in. deep. All plywood construction, metal hardware, heavy duty pre-tapped rack rails, 4 recessed large grip handles, recessed flush mount lids with latches and large, heavy duty stackable ball corners with or without heavy duty 3" wheels. CRP14W dimensions: 21W x 32.5H x 22D. Approx. 65 lbs.

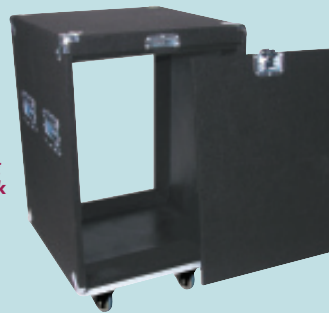
Learn more... www.SupremeAudio.com/Racks.htm



8 Sp. Carpeted Rack

Carpeted Racks - CRP & CRE Series (16" racking depth):

RK06CRE 6 Sp. Carpeted.....	\$119.00
RK06CREW 6 Sp. Carpeted/Wheels	\$175.00
RK06CRP 6 Sp. Carpeted,/Locking	\$224.00
RK06CRPW 6 Sp. Carpeted,/Locking/Wheels	\$280.00
RACK08 8 Sp. Carpeted.....	\$139.00
RACK8CREW 8 Sp. Carpeted, Wheels	\$196.00
RACK08CRP 8 Sp. Carpeted, Locking	\$239.00
RACK08CRPW 8 Sp. Carpet/Locking/Wheels ...	\$295.00
RACK10CRE 10 Sp. Carpeted	\$154.00
RACK10CRPEW 10 Sp. Carpeted,/Wheels	\$210.00
RACK10CRP 10 Sp. Carpeted/Locking.....	\$280.00
RACK10CRPW 10 Sp. Carp./Locking/Wheels ...	\$365.00
RACK12CRE 12 Sp. Carpeted	\$179.99
RACK12CREW 12 Sp. Carpeted/Wheels	\$219.99
RACK12CRP 12 Sp. Carpeted/Locking.....	\$325.00
RACK12LW 12 Sp. Carpeted/Locking/Wheels ...	\$379.00
RK14CRE 14 Sp. Carpeted	\$199.00
RK14CREW 14 Sp. Carpeted/Wheels	\$249.99
RK14CRP 14 Sp. Carpeted/Locking	\$329.00
RK14CRPW 14 Sp. Carpeted/Locking/Wheels ...	\$409.00
RK16CRE 16 Sp. Carpeted	\$209.00
RK16CREW 16 Sp. Carpeted/Wheels	\$269.00
RK16CRP 16 Sp. Carpeted, Locking	\$349.00
RK16CRPW 16 Sp. Carpeted/Locking/Wheels	\$439.00
RK18CREW 18 Sp. Carpeted	\$219.00
RK18CREW 18 Sp. Carpeted/Wheels	\$279.00
RK18CRP 18Sp. Carpeted, Locking.....	\$389.00
RK18CRPW 18 Sp. Carpeted/Locking/Wheels ...	\$435.00
RK28CREW 28 Sp. Carpeted/Wheels	\$439.99



14 Sp. Locking Carpeted Rack



Power Center
Rear view (right)

Roto Rolling Racks: SKB Series

The new Roto Rolling Racks feature industrial grade steel threaded rack rails and full access rear lids. Roto Rolling Racks are rotational molded of high impact LLDPE Polyethylene with in-line wheels supporting heavy loads, a nearly indestructible low-profile injection molded telescoping cushion grip rubber over-molded pull handle and cushioned handle for carrying comfort.

Roto Rolling Series Rolling Racks - All with Retractable Handle & Wheels.

RACKSKBR4W 4 Sp. Rolling Rack	\$199.99
RACKSKBR6W 6 Sp. Rolling Rack	\$214.99
RACKSKBR8W 8 Sp. Rolling Rack	\$239.99

"It WAS A PLEASURE speaking with you. Thank You for being so helpful. Your company is always a pleasure to work with."

~Linda Schugel & Aimee Sprague
Ovations Performing Arts Academy
Waretown, NJ

Rack Accessories, Bags & Utility Bags:

POWERCENTER 8 AC Outlet Power Panel	\$79.00
RKPANEL1 1 sp. - Black Solid Rack Panel	\$9.00
RKPANEL2 2 sp. - Black Solid Rack Panel	\$11.00
RKPANEL3 3 sp. - Black Solid Rack Panel	\$15.00
RKPANEL4 4 sp. - Black Solid Rack Panel	\$17.00
RKSPANEL1 1 sp. - Black Vented Rack Panel	\$32.00
RKSPANEL2 2 sp. - Black Vented Rack Panel	\$32.00
RKSPANEL3 3 sp. - Black Vented Rack Panel	\$32.00
RKSPANEL4 4 sp. - Black Vented Rack Panel	\$32.00
RKSHELF1 1 sp. Equipment Rack Shelf	\$42.00
RKSHELF2 2 sp. Equipment Rack Shelf	\$55.00
RKSHELF3 3 sp. Equipment Rack Shelf	\$62.00
RKSHELF4 4 sp. Equipment Rack Shelf	\$69.00
RKDRAWER1 - 1 sp. Rack Drawer	\$119.00
RKDRAWER2 - 2 sp. Rack Drawer	\$129.00
RKDRAWER3 - 3 sp. Rack Drawer	\$135.00
RKDRAWER4 - 4 sp. Rack Drawer	\$150.00
RKCASTERS - 4 Casters for Rack.....	\$29.00
RKKYLK - Key Lock Set for Rack Drawers	\$20.00
RKSCREWS Rack Screws & washers (24 ea.)	\$5.00

Equipment Racks & Accessories

Metal & Black Laminate Equipment Racks



Wall-Mount Locking Steel Racks: WMK Series

RKSBX7 7 Sp. Wall-Mount Rack - Rear Mounting Pan (15" racking depth)	\$269.00
RKSBX10 10 Sp. Wall-Mount Rack - Rear Mounting Pan (15" racking depth)	\$377.00
RKEWR0817SD 8 Sp. Wall-Mount Rack - Front & Rear Locking Doors (17" racking depth)	\$348.00
RKEWR0822SD 8 Sp. Wall-Mount Rack - Front & Rear Locking Doors (22" racking depth)	\$406.00
RKEWR1017SD 10 Sp. Wall-Mount Rack - Front & Rear Locking Doors (17" racking depth)	\$411.00
RKEWR1022SD 10 Sp. Wall-Mount Rack - Front & Rear Locking Doors (22" racking depth)	\$450.00
RKEWR1222SD 12 Sp. Wall-Mount Rack - Front & Rear Locking Doors (22" racking depth)	\$517.00

Heavy-Duty Steel Racks: PTRK Series

PTRK Heavy-Duty Racks use 16 ga. steel. 500 lb. capacity. 4" Commercial Grade Locking Casters. Key-Locked Front and Rear Doors.

RKPTRK14 14 Sp. Heavy-Duty Steel Rack – 24 1/2" High, 33 3/4" Height with Casters (21 1/2" racking depth)	\$600.65
RKPTRK21 21 Sp. Heavy-Duty Steel Rack – 36 3/4" High, 46" Height with Casters (21 1/2" racking depth)	\$635.00

Heavy-Duty Steel Racks: ERK Series

ERK Heavy-Duty Racks use 16 ga. steel. 2500 lb. capacity. Fully welded construction, solid sides. Finished in a durable black textured powder coat.

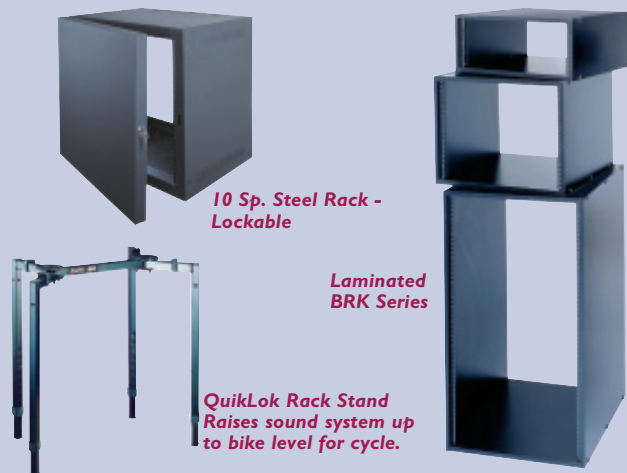
RKERK1820 18 Sp. Heavy-Duty Steel Rack – 31 1/2" High, 35 5/8" Overall Height (20" racking depth)	\$473.00
RKERK2120 21 Sp. Heavy-Duty Steel Rack – 36 3/4" High, 40 7/8" Overall Height (20" racking depth)	\$503.00
RKERK2720 27 Sp. Heavy-Duty Steel Rack – 47 1/2" High, 51 3/8" Overall Height (20" racking depth)	\$535.00
RKVRD18 18 Sp. Vented Rear Door	\$104.00
RKVRD21 21 Sp. Vented Rear Door	\$109.00
RKVRD27 27 Sp. Vented Rear Door	\$119.00
RKFD18 18 Sp. Solid Front Door	\$144.00
RKFD21 21 Sp. Solid Front Door	\$160.00
RKFD27 27 Sp. Solid Front Door	\$201.00
RKPFD18 18 Sp. Plexi Front Door	\$252.00
RKPFD21 21 Sp. Plexi Front Door	\$280.00
RKPFD27 27 Sp. Plexi Front Door	\$355.00
RKERKCBS20 Commercial ERK Wheel Base ...	\$160.00

Casters & Wall-Mount Shelves:

RKRKW Caster Kit (4) 150 lb. Capacity	\$42.00
RKRKW HD Caster Kit (4) 250 lb. Capacity	\$65.00
RKWMS Wall-Mount Steel Shelf – Vented Bottom Conduit Knockouts - 200 lb. Capacity 16 3/4" w x 20 7/8" d x 14" h (can be used to support "ER/IRK" Economy Racks	\$105.00

Rack Stands:

RKSTAND Rack Stand (42" h)	\$89.00
---	----------------



Black Laminate Equipment Racks: BRK Series (16" to 22" racking depth)

Quick assembly economy racks. Black oak laminate over 5/8" medium density fiberboard. Assembly hardware and 11-gauge steel rack rails are provided.

RKBRK04 4Sp. Black Wood Laminate (16" racking depth)	\$108.00
RKBRK06 6Sp. Black Wood Laminate (18" racking depth)	\$126.00
RKBRK08-18 8 Sp. Black Wood Laminate (16" racking depth)	\$133.00
RKBRK08-22 8 Sp. Black Wood Laminate (22" racking depth)	\$148.00
RKBRK12-18 12 Sp. Black Wood Laminate (18" racking depth)	\$145.00
RKBRK12-22 12 Sp. Black Wood Laminate (22" racking depth)	\$161.00
RKBRK14-18 14 Sp. Black Wood Laminate (18" racking depth)	\$151.00
RKBRK16-18 16 Sp. Black Wood Laminate (18" racking depth)	\$160.00
RKBRK16-22 16 Sp. Black Wood Laminate (22" racking depth)	\$186.00
RKBRK20-18 20 Sp. Black Wood Laminate (18" racking depth)	\$170.00
RKER20-22 20 Sp. Black Wood Laminate (22" racking depth)	\$209.00

Economy Rack Doors:

Smoked 3/16" Plexi Door. Textured Powder Coat Finish with Keyed Locks

RKRXGD08 Tempered Smoked Door-BRK8	\$10.00
RKRXGD12 Tempered Smoked Door-BRK12	\$121.00
RKRXGD16 Tempered Smoked Door-BRK16	\$147.00
RKRXGD20 Tempered Smoked Door-BRK20	\$160.00

Steel Security Doors:

Steel Security Doors with Keyed Locks

RKSSDR08 Steel Security Doors for #12	\$103.00
RKSSDR12 Steel Security Doors for #16	\$112.00
RKSSDR16 Steel Security Doors for #20	\$131.00
RKSSDR20 Steel Security Doors for #20	\$160.00

Sound System Components